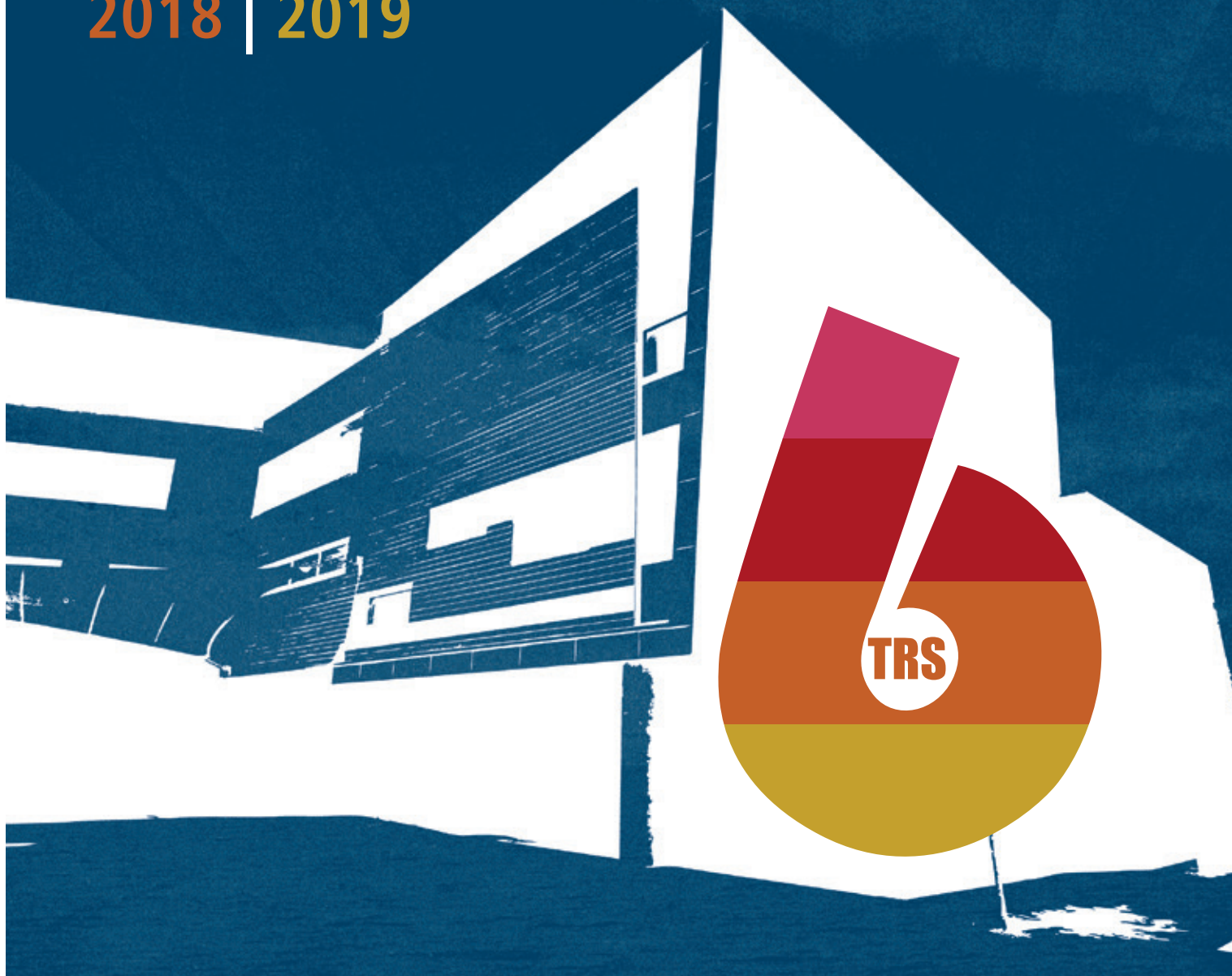


THE REGIS SCHOOL SIXTH FORM

2018 | 2019



The Regis School
The best in everyone
Part of United Learning

WELCOME

Thank you for your interest in the Sixth Form at The Regis School. It gives me great pleasure to welcome you to this vibrant part of our learning community, and to share with you the range of courses and opportunities available to our students.

As Principal, I am keen that our 6th Form provision meets the needs of as many students as possible for level 3 studies, whether they have aspirations to go to university, into apprenticeships or the world of work. Last year's results saw the highest pass rate at top grades in the school's history, with half of all grades being A*-A, showing the quality of teaching and learning support. I know that our Head of Sixth Form, Mrs Connie James, shares my ambition for, and commitment to, further success whether in examination results, social activities, personal development, or leadership opportunities.

Life in the Sixth Form is both different and special. Students enjoy the benefits of dedicated facilities in our 6th Form College, small class sizes that average 10, no uniform, but a dress code, high quality advice and guidance in dedicated tutor groups, and a range of opportunities in the sports and arts. The size of the Sixth Form ensures a sense of community, appropriate individual support, and a range of pathways through to higher education or employment.

Students from TRS move on to University courses throughout the UK and study an amazing range of subjects ... Architecture; Data Science; Engineering; History; Law; Mathematics; Medicine; Pharmacology; Physics; Primary Education; Psychology; Sport Science; Veterinary Medicine ... to name but a few. Current undergraduates and recent graduates have attended universities such as Bristol; Brighton; Brunel; Chichester; East Anglia; Exeter; Leeds; Newcastle; Nottingham; Portsmouth; Sheffield; Southampton; Sussex; Warwick and York.

I am immensely proud of the Sixth Form at The Regis School and I hope that the courses outlined in this prospectus will spark your interest. I know that you will value the care, individual attention, and sense of community which makes the Sixth Form College so successful achieving 'The Best in Everyone'.

Mike Garlick

Principal



Welcome to the new Regis School Sixth Form Prospectus for 2018.

Please take the time to read about what we have to offer you as a member of Sixth Form here. It really is an exciting time to join The Regis School Sixth Form, and you will play a leading role in the life of the school.

As a sixth form student you will follow a level 3 programme of study. The subjects you study will depend on your final GCSE results. You will be expected to choose a minimum of three subjects to study over two years.

You will also have the opportunity to be involved with a wide range of enrichment activities including social, sporting and charity events. You will be a part of a weekly enrichment programme which includes an Arts Silver Award, Sports Leaders Awards and Peer Mentoring/ Reading Programmes. You will have the opportunity to be a part of our Sixth Form Council as well.

Our Sixth Form is a happy and stimulating place in which learning is not just rewarding, but enjoyable too. Our students are enthused by the subjects they study and show a thirst for learning and a desire to achieve their academic potential. Students are provided with excellent social and working areas which are vibrant, well organised and attractive.

The Sixth Form at The Regis School is an exciting place to belong, where you will have the opportunity to leave not only with excellent academic results, but the skills, independence, confidence and attitudes that you will need to thrive in your next steps in education.

I very much look forward to working with you and helping you to achieve your full potential.

Great things are on your horizon: 'Believe, Aspire, Achieve'.

Mrs Connie James

Head of Sixth Form



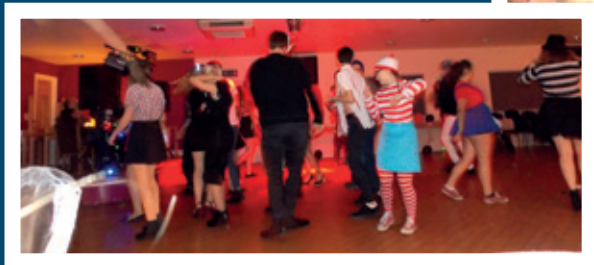
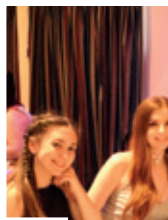
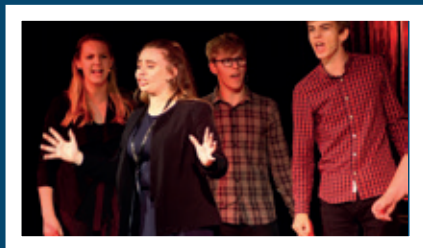
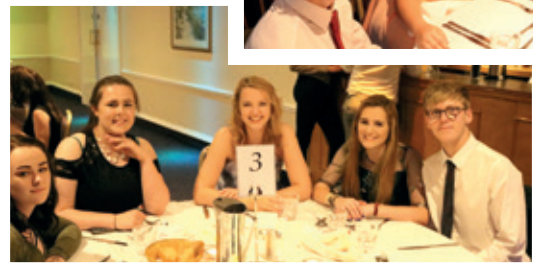
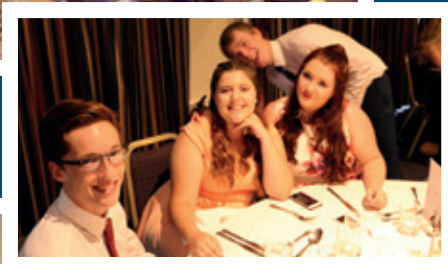
WHAT WE ENJOY

Here are some photos of a few of the events that we really enjoy.

We have an annual Halloween Fancy Dress Party. In addition, for the last nine years we have held our Sixth Form Christmas Party at a club or hotel in Bognor Regis, when we hire out the whole venue for our exclusive use.

We close each year with our annual Sixth Form Summer Ball, held in June at the Chichester Park Hotel. It is attended by over 100 guests. We have a three course dinner, followed by a disco. This is a wonderful celebration and a great opportunity for us to say goodbye to the Year 13 students in style.

Many students take part in a variety of dances and acts in shows during the year, which are watched by audiences consisting of pupils, members of the community and members of staff. The last production was "School of Rock " which ran on three consecutive nights and was enjoyed by all who watched it and the actors and stage crew.



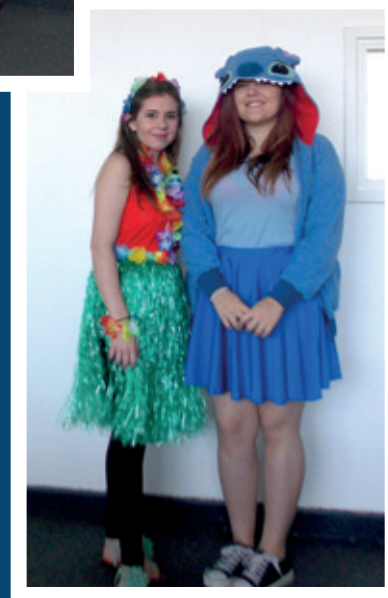
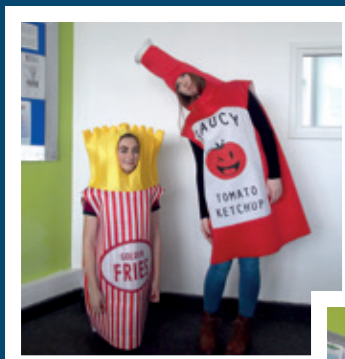
CHARITY EVENTS

Several thousand pounds have been raised over the years by our 6th Form students, for various charities which are chosen annually by the students. This includes a donation of £2814 to "Help for Heroes" in a previous year.

6th Form students have taken part in various fund raising events including 6th Form Bake Off; Christmas Cup Cake Competition; a sponsored dog walk on Bognor Esplanade; an all-day rowing challenge involving 6th Form students, teachers and students from younger year groups. Last year the 6th Form helped to run a Reindeer Run on the last day of the Christmas term, all of Year 7 were invited to complete an obstacle course wearing reindeer antlers, they raised £1438 for Chestnut Tree House Hospice.

Large sums are always raised at the annual Fashion Show, from the 2017 event a cheque was donated to "Batti Hi Village" in Gambia. Textiles students made fabric bags and filled them with gifts for children in this African village.

Sixth Form Tutor groups create and run their own fund raising projects. In the past, students have organised Handmade Christmas Stockings and Bunting; Staff car washing; Grand raffle; Cake sale; Christmas Jumper competition; Christmas Raffle; Fancy Dress Day; Dress as a Girl Football Match; record a Music cd; Personalised Candy canes delivered to students and staff.



THESE ARE SOME OF THE SUBJECTS THAT PREVIOUS STUDENTS HAVE GRADUATED IN:

ECOLOGY & WILDLIFE
 CONSERVATION
 MENTAL HEALTH NURSING
 POLITICS EARLY CHILDHOOD STUDIES
 BUSINESS
 PRIMARY TEACHING
 CHEMISTRY
 DRAMA
 FASHION
 PSYCHOLOGY
 ARCHITECTURE
 PHARMACOLOGY
 MEDICINE
 PHYSICS
 CRIMINOLOGY
 HISTORY
 BIOMEDICAL SCIENCE
 WORK TAILOS
 ART
 FINE
 PARAMEDIC SCIENCE
 LAW
 ENGLISH
 DATA SCIENCE
 MATHEMATICS
 SPORT & EXERCISE
 MUSIC
 PRODUCT DESIGN

GRADUATE RESULTS 2017

We are very proud to announce that these previous 6th Form students graduated this year with the following degrees

Student	University and Course
Chloe Archer	Kent - Politics & English Language & Linguistics
Aysha Begum	Chichester - Early Childhood Studies
Shahiba Begum	Chichester - Early Childhood Studies
George Burgess	Bournemouth - Games Technology
Jessica Hall	Warwick - Chemistry
Annabelle Hellyer	Winchester - Psychology
Emma Knights	Chichester - Dance
Sophie Melard	Brunel - Physical Education and Youth Sport
Scott McClinton	Portsmouth-Journalism with English Language
Lucy Moore	Brighton - Theatre Arts
Emily Murphy	Chichester - Early Childhood Studies
John Newman	Surrey - Physics
Samuel Pett	Roehampton - Primary Education
Ben Scrivens	Bath - Natural Sciences
Lauren Sells	King's College - Adult Nursing
James Shea	Coventry - Management & Leadership

"Education must develop every child's personality, talents and abilities to the full"

(UNCRC Article 29)



UNIVERSITY APPLICANTS

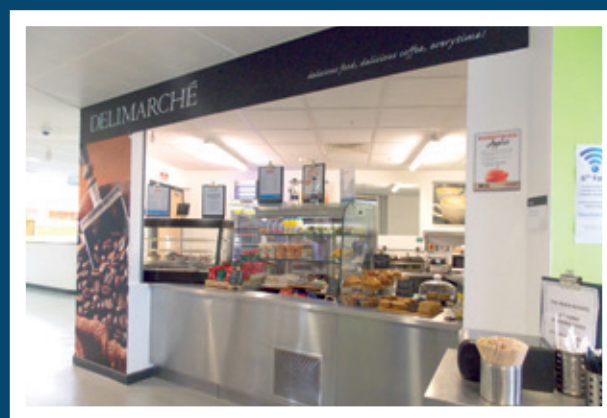
Here are the Universities and courses that our 2017 Leavers are headed for:

Student	University and Course
Moin Ahmed	Bradford - Civil & Structural Engineering
Rashida Begum	Sussex - English Language & Literature
Yharna Bell	Roehampton - Anthropology
Harry Bicker	Essex - Business Management
Kurtis Buck	Reading - Mathematics
Jemma Capper	Winchester - Law
Sania Chowdhury	City,London - Law
Anya de Gennaro	Chichester - Sports Therapy
Molly Double	Portsmouth - Pharmacology
Zak Georgiou	Nottingham Trent - Psychology
Ross Girling	Chichester - Sport & Exercise Science
Connor Gormley	Exeter - English
Alex Hall	Portsmouth - Sport & Exercise Science
Tom Halliday	ACM - Music Industry Practice
Kimberley Kwok	UCA - Fashion
Peter Lambert	Portsmouth - Drama
Will Lewis	Chichester - PE (Secondary Years)
Julia Malinowska	Warwick - Law

Lucy McGuigan	Roehampton - Film & Creative Writing
Hollie Mills	Oxford Brookes - Education Studies
Elliot Mitchell	Portsmouth - Pharmacology
Lily Mitchell	Southampton Solent - Criminology
Alexa Olsen	Winchester - Fashion Marketing
Bailey Patten	Brighton - Product Design Technology
Esme Picton	Leeds- History
Alex Pollard	Southampton - Games Design
Alex Ralf	Southampton Solent - Sport & Exercise Therapy
Callum Roper	Brunel - Military & International History
Thomas Schneider	Portsmouth - Drama
Megan Sheridan	Essex - Actuarial Science
Morgan Smart	East Anglia - Maths with Business
Ryan Spray	Portsmouth - Civil Engineering
Alex Stanton	Chichester - Sport & Exercise Science
Amy Taylor	Chichester - Early Childhood Studies
Aisha Taylor-Samson	Portsmouth - Business
Bethany Terris	York - Physics with Philosophy
Kristine Timiscenko	Southampton - Philosophy & English
Jess Tomkins	Bournemouth - Finance & Business
Georgia Whitehand	Brighton - Chemistry

“Education must develop every child’s personality, talents and abilities to the full”

(UNCRC Article 29)



THE REGIS SCHOOL SIXTH FORM GREAT THINGS ARE ON YOUR HORIZON

The Regis School is an inclusive Sixth Form offering a wide range of exciting courses from the traditional A Levels to the Applied Learning (Vocational) options. There are also opportunities for development through various enrichment activities, such as Sports Leadership Award, Arts Silver Award, Peer Mentoring scheme, Peer Reading scheme and the Sixth Form Council.

THE SIXTH FORM AND THE LIFE OF THE SCHOOL

As a member of the Sixth Form you will set an example to the school and your contribution to the life of the school is vital. You will have the opportunity to become a Student Leader – working within Faculties to support main school students in lessons. You can help make a difference.

EXPECTATIONS

The Regis School offers a friendly and caring environment that is designed to help you succeed. The emphasis is on respect for yourself and for others. Expectations are high and to help you realise your potential we encourage self discipline and self motivation. The Head of Sixth Form and the tutor team are always ready to offer help, encouragement and support. All students are regularly interviewed and progress is monitored, by teachers, tutors and the Head of Sixth Form.

SIXTH FORM FACILITIES

The Sixth Form has its own designated area, with a Study Room, a Common Room and a cafeteria. There is a study room equipped with computers and work areas, and this is staffed by our Sixth Form Learning Mentor who ensures a silent working area and offers support with your studies. Seating areas are available in the Common Room for any group work and discussions. As a member of the Sixth Form you have privileged access to computer rooms, the Library and the Arena.

SIXTH FORM STUDENT COMMITTEE

The Sixth Form Council is formed of a group of lively and enthusiastic students who play an important role in the life of the whole school. The Council is responsible for representing the voice of the student body to the Head of Sixth Form, and helps to plan and organise many social and charity events.

Here are a few of the exciting things they have organised previously:

Charity Event	Summer Ball	Halloween Party
Christmas Party	Cake sales	Hoodies launch
Film Nights	All day Rowing Challenge for Sport Relief	

Be ready to get involved: the Sixth Form works best when everybody takes an interest and plays their part. The more you put into something, the more you get out.

PARENTAL CONTACT

Parents are kept informed of progress through Parent and Tutor Evenings, interim and full reports and formal Parents Evenings and informally by contact with the Head of Sixth, the Tutor Team and the Sixth Form Administrator who welcomes enquiries.

CAREERS

All Sixth Form students have access to Careers Advice from our Careers Advisor in the Careers Room, which is situated opposite reception on the ground floor. The Careers Advisor is in school every day and Sixth Form students can call in at any time. We work hard to support you with your next steps. If you need help in looking for a job, an apprenticeship or going to University between us we endeavour to provide you with all the help and advice that you will need.

MAKING THE RIGHT CHOICE-A LEVEL, BTEC OR A COMBINATION?

You are making a very important decision so think carefully and read the information in the prospectus carefully. When you have considered all your options, I am convinced that you will see that The Regis School has something to offer you.

Level 3 subjects include A Levels, Applied Learning (Vocational) A Levels or BTEC subjects at A Level standard. They are 2 year courses and are suitable for you if you have gained more than **5 grade A*-C (9 – 4) at GCSE**. You will also often need a grade B at GCSE if you wish to study that subject at A Level. You will be asked to choose 3 subjects to study. The key difference between A Levels and Applied Learning courses is that the Applied Learning courses are coursework based and usually involve less exams.

Examples of Applied Learning Courses are:

BTEC Extended National Triple Diploma - These courses are equivalent to three A Levels, taken over 2 years. They attract the same University points as A Levels and are a good route to University or employment. There is an element of work experience in some subjects. These courses comprise of coursework and examinations.

BTEC Extended Certificate or BTEC Diploma - These courses are either (dependent on the subject) a single award equivalent to one A Level, or a double award equivalent to two A Levels, both are taken over 2 years. They attract the same University points as A Levels and are a good route to University or employment. There is an element of work experience in some subjects. These courses comprise of coursework and examinations.

TYPICAL PROGRESSION ROUTES THROUGH THE REGIS SCHOOL SIXTH FORM

Your progression through the Sixth Form depends on your needs, abilities and determination. We will work with you to ensure the route you choose allows you to progress at a speed that suits you.

If you achieve a minimum of 5+ A*-C (9 – 4) at GCSE you will most likely take 3 A Levels. If you have mainly A* and A grades you may choose to study 3 A Levels and an EPQ.

8 - 10 GCSE's
(high level)

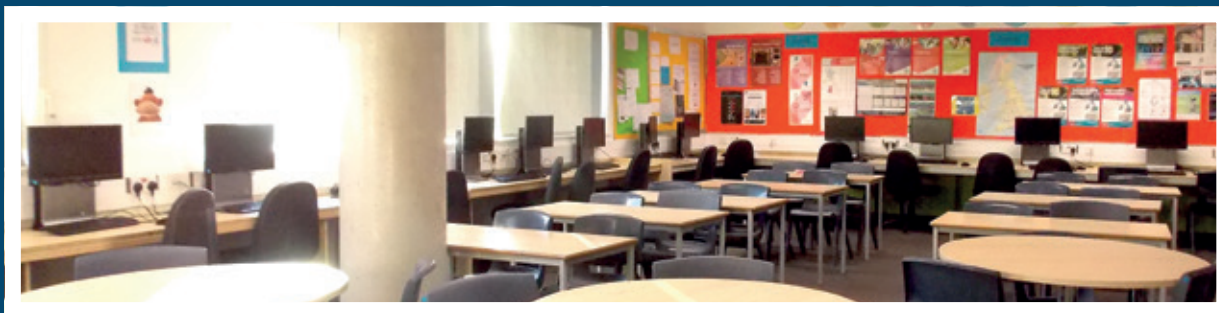
3 A Levels
+ EPQ

5 or more GCSE's
(mainly 6 (B) and above)

3 A Levels
or Triple BTEC Level 3
(or a combination of A
Level and single BTEC)

5 or more GCSE's
(mainly 4 (C) and above)

Triple BTEC Level 3
(equivalent to 3A
Levels)



THE SIX STEPS TO SUCCESS

Step 1: Selecting Your Course

Great care should be taken in selecting courses. Seek as much advice as possible.

You should consider the following points:

- (1) **Ability** – remember that GCSE success does not guarantee similar success in the Sixth Form
- (2) **Personal preference for a subject** – interest is a great motivator, and a good place to start. The nature of subjects can change in the Sixth Form, so some research is vital.
- (3) **Inter-relationship of subjects** – do you want to study subjects that have a natural grouping, (e.g. Chemistry, Maths, and Physics)? These subjects provide some natural support for each other or do you want to study a diverse range of subjects that will keep your options open?
- (4) **Higher Education** - If you are thinking of Higher Education, some degree subjects ask for specific A levels: for example Engineering often asks for Physics at A level.

Finally – Please make sure that you speak to your teachers. Ask them if they feel you are able to handle the demands of an A level or BTEC in their subject. This is really important because you need to make sure that you choose the right courses and are going to be happy and enjoy them

Step 2: The Open Evening

The evening is designed to give you both general and subject specific information, and for you and your parents to tour the school and speak to the subject teachers.

Step 3: The Application

You will receive an application form that will outline the courses on offer and the blocking structure. You will be asked to indicate which subjects you wish to study in the Sixth Form. This information is collated and references will be sought from your tutor or Head of House to check that your application is realistic and to ask about your track record on behaviour and attendance. Remember that at this stage your choices are not fixed and you may change them at a later date.

Step 4: Interviews with Senior Staff

All year 11 students will be invited for an interview with the Head of 6th Form. The purpose of this interview is to check through your choices and to make sure that you are certain of your next step. The interviews are informal and will take place in January.

Step 5: The formal offer

You will receive formal written offer of a place in Sixth Form that will be conditional on your GCSE results. You will be asked to formally accept the offer.

Step 6: Results and enrolment

The GCSE results are published in August and staff are in school to offer help and advice. There will be surprises and disappointments which may cause an alteration in your original choices. We will work with you to accommodate any changes you wish to make at that time, within the framework of the existing timetable.

Full details of the enrolment procedure will be sent to you in July.



LEVEL 3 COURSES AS/A2

- 13 Art
- 14 Biology
- 15 Business Studies
- 16 Chemistry
- 17 Economics
- 18 English Literature
- 19 Fashion and Textiles
- 20 French
- 21 Geography
- 22 German
- 23 Government and Politics
- 24 History
- 25 Mathematics
- 26 Further Mathematics
- 27 Media Studies
- 28 Photography
- 29 Physics
- 30 Product Design
- 31 Psychology
- 32 Religious Studies
- 33 Sociology
- 34 Extended Project Qualification

LEVEL 3 BTEC COURSES

- 35 Applied Science BTEC Extended Certificate
- 36 Computing BTEC Diploma
- 37 Health and Social Care BTEC L3 National Diploma (Triple)
- 38 Music BTEC L3 Diploma
- 39 Performing Arts BTEC L3 Foundation Diploma
- 40 Sport BTEC National Extended Diploma (Triple)
- 40 Sport BTEC Extended Certificate (Single)

ENTRY REQUIREMENTS

At least a B grade in Art. If you have not taken Art for a GCSE you will have to show a portfolio of personal work to prove that you can meet the requirements for the course.

WHY STUDY THIS COURSE?

At the Regis School we offer a versatile Visual Arts course that allows students to develop a diverse and creative portfolio in Ceramics, Textile Art and Fine Art. You will have the opportunity to experiment with materials, refine processes and create dynamic outcomes. This will enable you to continue to expand on prior learning, building upon your technical and practical knowledge of drawing; colour; material explorations and resolving outcomes and pushing your risk taking skills.

WHAT WILL I STUDY IN ART?

You will be given a theme as a starting point such as 'Metamorphosis' or 'Dialogue', where you will analyse and respond to the work of artists. The course is very broad and allows you to expand your thinking alongside your practical explorations as you develop your use of visual communication. You'll explore a range of media and applications, experiencing both two and three dimensions. You will be able to express your ideas through the following: Drawing, Ceramics, Painting, Printmaking, Sculpture, Mixed Media and Film. You will develop your preparatory studies in to a final outcome, accompanied by a written evaluation. There will also be an opportunity to visit local and London Galleries. Students will be expected to visit galleries and museums as part of their independent learning.

HOW WILL I BE ASSESSED IN ART?

Component 1: Personal Investigation

Students are required to produce a personal investigation based on personal starting points, devised by you in consultation with your teachers. Personal investigation should include both supporting studies and personal outcome(s).

Component 2: Externally Set Assignment

The externally set assignment (ESA) paper, which contains a broad-based theme with supporting visual and written stimuli will be released each year. The ESA paper can be given to students any time after its release date. Students will be required to respond to one externally-set, broad-based thematic starting point to encourage independence in developing ideas, intentions and outcome(s).

FUTURE PATHWAYS & CAREERS IN ART

Professional artist; Tattoo artist; Social Media; Marketing; Art Teacher; Curator; Reportage Illustrator; Storyboard artist; Sculptor; 3D designer; Architect; Model Maker; Ceramicist; Graphic Designer; Fashion Illustrator; Fine artist; Animator; Web designer.

STUDENT COMMENT

"A Level Art gives you the opportunity to experiment with materials and media that you haven't used before. You are allowed to use the art rooms whenever you want and the teachers are never too busy to give you advice and guidance at any time."

**FURTHER INFORMATION FROM
MRS CAMERON-LAURIE**

BIOLOGY

ENTRY REQUIREMENTS

Entry qualification: Grade B in Additional Science.

Due to the extended nature of Triple Science, students with a C grade in GCSE Biology will be accepted on a case by case basis.

WHY STUDY THIS COURSE?

The AS Biology course build on the work covered in the year 11 science courses. The course aims to look in detail at a number of exciting biological phenomena and pupils gain a valuable understanding of how life, in a variety of forms, flourishes on the planet. The nature of the course means that experimental work is integrated throughout to embed concepts within real life examples.

Our modern laboratory facilities provide us with the perfect environment to combine the theoretical and practical elements of the course. Over the years we have found the best ways to support and develop the independent learning skills necessary for success in 6th form and at university. Beyond the curriculum the department is partnered with the University of Brighton and supports three students a year completing Nuffield research placements in the summer holidays.

WHAT WILL I STUDY IN BIOLOGY?

A/S

Consists of 4 main topics:

- **Biological Molecules:** The role of various key molecules in the preservation of life, including carbohydrates, proteins and lipids.
- **Cells:** A detailed look at the organelles inside cells, their functions and roles in both healthy and diseased cells and tissues
- **Organisms exchange substances with their environment:** The role of the cell membrane and the various ways it controls how things move in and out of cells. The roles of diffusion and osmosis in tissues of animals and plants and their key roles in survival
- **Genetic information, variation and relationships between organisms:** From the structure replication and coding of DNA and genes to the complex interdependence of living thing within an ecosystem.

A2

Contains a further 4 topics

- **Energy transfers in and between organisms:** Photosynthesis, Respiration in terms of their biochemical pathways and the flow of energy within food chains
- **Organisms respond to changes in their internal and external environments:** The sense organs and nervous system, how neurones create signals and how organisms respond to stimuli to ensure survival
- **Genetics, populations, evolution and ecosystems:** The role speciation plays in evolution, and how communities of organisms change over time to adapt to environments
- **The control of gene expression:** the role of proteins in the translation of the genetic code into viable and useful products and effects.

HOW WILL I BE ASSESSED IN BIOLOGY?

AS: 2 written papers comprising 100% of the marks. 1.5 hours in duration

A2: 2 written papers comprising 35% of the marks each. Third and final written paper has a synoptic element of both years and tests practical skills acquired, comprising the remaining 30% of marks.

FUTURE PATHWAYS & CAREERS IN BIOLOGY

Biological Sciences is one of the most respected A Levels and will be looked upon favourably by any student wishing to follow a path into higher education or employment.

Biology is an obvious route into any science degree from psychology to genetics. Medicine and physiotherapy also require a strong biological foundation.

Biology is also useful for people looking to study law or journalism, as both fields require some practitioners with a more detailed understanding of biology.

STUDENT COMMENT

“I enjoy how Biology allows me to understand the complex things that go on all the time in living things. The experiments we do use more complex equipment, which allows us to work in a similar way to actual research biologists.”

FURTHER INFORMATION FROM MR WOOD

BUSINESS STUDIES

ENTRY REQUIREMENTS

5 A*- C or 4+ GCSE grades. English Language grade 5 and Maths grade 5. (A grade 4 in English and Maths will be considered but on an individual basis.) You do not need to have studied Business Studies before, but if you have, a minimum of a C grade is needed.

WHY STUDY THIS COURSE?

Business Studies combines academic study with an understanding of the real commercial world. The efficiency and effectiveness of the business community is vital for the success and growth of the nation. Whether you are running your own business or working for a large company in one of their functional departments, Business Studies will help you gain a fuller understanding of what makes a business a success or failure. From the smaller home .com business to the globalisation of large corporations, this subject is very relevant both to academia and personal development.

Business Studies is a successful subject at the Regis School. The lessons are interactive and full of lively debate. Results are on an upward trend and given this and the relevance of the subject, the number of students taking this subject remains high.

WHAT WILL I STUDY IN BUSINESS STUDIES?

Year 12

1. What is Business?
2. Managers, Leadership and Decision Making
3. Decision Making to Improve Marketing Performance
4. Decision Making to Improve Operational Performance
5. Decision making to Improve Financial Performance
6. Decision Making to Improve Human Resource Management.

Year 13

7. Analysing the strategic position of a business
8. Choosing Strategic Direction
9. Strategic Methods: How to Pursue Strategies.
10. Managing Strategic Change

HOW WILL I BE ASSESSED IN BUSINESS STUDIES?

To get the A Level you will complete 3 Papers each 2 hours long, all with equal weighting.

Paper 1

15 multiple choice questions = 15 marks
Short answer questions = 35 marks
2 essays = 50 marks (25 marks each)

Paper 2

3 data response questions broken into 3 or 4 parts i.e. 1a, 1b, 1c, 1d, = 100 marks

Paper 3

6 questions based on a case study = 100 marks.

NB The AS Level will be offered at the end of year 12, with the understanding that the grades do not count towards the full A Level. To do the AS you will complete 2 papers (both 90 minutes) – equal weighting.

Paper 1

10 multiple choice questions = 10 marks.
20 short answer questions = 20 marks.
2 data response questions = 50 marks.

Paper 2

7 questions relating to a case study.

FUTURE PATHWAYS & CAREERS IN BUSINESS STUDIES

Students from this course successfully progress into employment within the world of business, onto apprenticeships in business related areas and on to degrees such as business studies, business management, business enterprise and management studies. Depending on their combination of A Levels, students often combine business with another related subject at university such as economics, finance, accounting, law, mathematics or psychology. Studying Business is also a useful starting point for a career in business, accounting, insurance, finance and banking.

STUDENT COMMENT

"I enjoy a good relationship with my teachers".
"I get regular and useful feedback about my work".
"There are a good range of opportunities available, eg. revision conferences".

FURTHER INFORMATION FROM MR VASSILIOU

CHEMISTRY

ENTRY REQUIREMENTS

Grade B in Additional Science.

Due to the extended nature of Triple Science students with a C grade in GCSE Chemistry will be accepted on a case by case basis.

WHY STUDY THIS COURSE?

Chemistry has been responsible for greatly improving the quality of life in the last 100 years. Chemistry concerns itself with the study of atoms, the very foundation of all things, and how they interact with each other. It then tries to manage and predict reactions to most benefit the interests of society.

Our modern laboratory facilities provide us with the perfect environment to combine the theory and practical elements of the course. Over the years we have found the best ways to support and develop the independent learning skills necessary for success in 6th form and at university. Beyond the curriculum the department is partnered with the University of Brighton and supports three students a year completing Nuffield research placements in the summer holidays.

WHAT WILL I STUDY IN CHEMISTRY?

A/S

Physical chemistry

Including atomic structure, amount of substance, bonding, energetics, kinetics, chemical equilibria and Le Chatelier's principle.

Inorganic chemistry

Including periodicity, Group 2 the alkaline earth metals, Group 7(17) the halogens.

Organic chemistry

Including introduction to organic chemistry, alkanes, halogenoalkanes, alkenes, alcohols, organic analysis.

A2

Physical chemistry

Including thermodynamics, rate equations, equilibrium constant (K_c) for homogeneous systems, electrode potentials and electrochemical cells.

Inorganic chemistry

Including properties of Period 3 elements and their oxides, transition metals, reactions of ions in aqueous solution.

Organic chemistry

Including optical isomerism, aldehydes and ketones, carboxylic acids and derivatives, aromatic chemistry, amines, polymers, amino acids, proteins and DNA, organic synthesis, NMR spectroscopy and chromatography.

HOW WILL I BE ASSESSED IN CHEMISTRY?

AS: 2 written papers comprising 100% of the marks 1.5 hours in duration

A2: 3 written papers. Paper 1 and 2 are both 35% of the final grade and cover the course topics individually. Paper 3 is worth the remaining 30% of marks and contains practical based questions, and a multiple choice section.

FUTURE PATHWAYS & CAREERS IN CHEMISTRY

Chemistry is one of the most respected A Levels and will be looked upon favourably by any student wishing to follow a path into higher education or employment.

Chemistry naturally leads into many university degrees, from numerous pure chemistry courses that look at a variety of aspects, to more vocational degrees like pharmacology and forensic science.

Any medical or veterinary path will require a high chemistry A level grade.

Many other careers, such as law and journalism, require some people with specialist chemical knowledge.

STUDENT COMMENT

"Chemistry has a great mix of practical and theory lessons, we get to use the techniques we learn about and compare our answers to what is predicted. The new course allows us to get coursework marks for completing normal practical lessons. I am much more confident at using the equipment now because we are trusted to work independently."

FURTHER INFORMATION FROM MR ROBBINS

ECONOMICS

ENTRY REQUIREMENTS

5 A* - C or 4+ GCSE grades. English Language grade 5 and Maths grade 5. (Grade 4's in English and Maths will be considered, but only on an individual basis.

WHY STUDY THIS COURSE?

Economics as an A Level is an excellent qualification for future employment and covers a wide range of professions and vocation.

Economics raises awareness of the range of functions of the local, national and international economy. It provides students with a critical understanding of the dynamic external environment that the world operates in and also looks at the effects this can have upon a business, an individual and countries as a whole. The subject encourages students to acquire a range of skills: research skills, data handling, presenting arguments, making judgements, problem solving, decision-making and challenging their own assumptions.

Economics combines well with any other subject. **There is no requirement to have studied Economics or Business at GCSE.** Interest, enthusiasm and commitment are vital personal ingredients for success on this course.

WHAT WILL I STUDY IN ECONOMICS?

Individuals, firms, markets and market failure

- 1 Economic methodology and the economic problem
- 2 Individual economic decision making
- 3 Price determination in a competitive market
- 4 Production, costs and revenue
- 5 Perfect competition, imperfectly competitive markets and monopoly
- 6 The labour market
- 7 The distribution of income and wealth: poverty and inequality
- 8 The market mechanism, market failure and government intervention in markets

The national and international economy

- 9 The measurement of macroeconomic performance
- 10 How the macroeconomy works : the circular flow of income, AD/AS analysis, and related concepts
- 11 Economic performance
- 12 Financial markets and monetary policy
- 13 Fiscal policy and supply-side policies
- 14 The international economy

HOW WILL I BE ASSESSED IN ECONOMICS?

Paper 1: Markets and market failure

Method of Assessment - written exam: 2 hours - 80 marks - 33.3% of A-level Questions

Section A: data response questions requiring written answers, choice of one from two contexts worth 40 marks

Section B: essay questions requiring written answers, choice of one from three worth 40 marks

Paper 2: National & international economy

Method of Assessment - written exam 2 hours - 80 marks - 33.3% of A-level Questions

Section A: data response questions requiring written answers, choice of one from two contexts worth 40 marks

Section B: essay questions requiring written answers, choice of one from three worth 40 marks

Paper 3: Economic principles and issues

Method of Assessment - written exam: 2 hours - 80 marks - 33.3% of A-level Questions

Section A: multiple choice questions worth 30 marks

Section B: case study questions requiring written answers, worth 50 marks

If the AS course is completed only the first 2 papers are completed both have equal weighting. The Method of assessment also changes.

FUTURE PATHWAYS & CAREERS IN ECONOMICS?

Degrees in Economics, either general or topic specific lead to Careers in finance, accounting, marketing, HR, manufacturing, administration – to name but a few

STUDENT COMMENT

“loved finding out what the Prime Minister does”

“relevant to the real world”

“lots of graph interpretation”

FURTHER INFORMATION FROM
MR VASSILIOU

ENGLISH LITERATURE

ENTRY REQUIREMENTS

Grade 6 or above at GCSE level in Literature

WHY STUDY THIS COURSE?

English Literature is a sought after A' Level by many universities and is a requirement for a number of university courses. It is obviously necessary for students who intend to follow a tertiary level Literature course but is also essential for many Law Degree courses.

For those who enjoy reading, particularly fiction texts, this course offers students the opportunity to develop their reading skills alongside achieving an academic qualification. Literature study broadens the mind, and develops your skills of analysis and interpretation.

Literature study demands that students become independent thinkers and researchers. These are skills that are necessary for university success and so Literature students are well prepared for the next stage in their academic careers.

WHAT WILL I STUDY IN ENGLISH LITERATURE?

Component 1: Drama and poetry pre-1900

Students will study one Shakespeare text, one pre-1900 drama text and one pre-1900 poetry text. They will study Shakespeare's use of language and dramatic effects, how context shapes meaning, the ways texts relate to each other and to literary movements, and will explore contrasts and connections between their chosen texts.

Component 2: Comparative and contextual study

Students will study two prose texts from one topic area including "The Gothic", "Dystopia" and "American Literature 1880-1940". Students will study links and connections between texts, understand the importance of literary traditions, learn how to analyse unseen extracts effectively and read widely and independently in the chosen topic area.

Component 3: Literature post-1900

Students will study one prose text, one poetry text and one drama text, all published later than 1900. One text will be used as the basis for a creative response, the other two will be used for a comparative essay. Students will develop an appreciation of how writers shape meanings in texts through use of language, imagery, form and structure and show familiarity with at least one work of literary criticism.

HOW WILL I BE ASSESSED IN ENGLISH LITERATURE?

Component 1: A closed book written paper of 2 hours 30 minutes, divided into 2 sections and worth 60 marks or 40% of the total A Level.

Component 2: A closed book written paper of 2 hours 30 minutes with 2 tasks including response to an unseen prose extract and a comparative essay, worth 60 marks or 40% of the total A Level.

Component 3: Non-examined assessment (coursework) including one piece of re-creative writing and worth 40 marks or 20% of the total A Level.

FUTURE PATHWAYS & CAREERS IN ENGLISH LITERATURE

Degrees in Literature, English, Media, Law, Journalism, General BA degrees...

Careers in teaching, lecturing, journalism/media, writing, editing/publishing, business (e.g. Human Resource Management), Sociology, Psychology... Literature is a sought after component for many degree courses and career paths.

STUDENT COMMENT

"The literature course really challenges your reading, thinking and research skills – but in a good way! I was not sure what I wanted to do after Sixth Form and I chose Literature as I know it is a subject that will be useful to me no matter what I decide to do at University."

FURTHER INFORMATION FROM MR CLARK

FASHION AND TEXTILES

ENTRY REQUIREMENTS

Grade B or above in GCSE Textiles and Grade 4 in GCSE English

WHY STUDY THIS COURSE?

This creative and thought-provoking qualification gives students the practical skills, theoretical knowledge and confidence to succeed in a number of careers. Especially those in the creative industries. They will investigate historical, social, cultural, environmental and economic influences on design and technology, whilst enjoying opportunities to put their learning in to practice by producing prototypes of their choice. Students will gain a real understanding of what it means to be a designer, alongside the knowledge and skills sought by higher education and employers.

WHAT WILL I STUDY IN FASHION & TEXTILES?

A-level Design and Technology: Fashion and Textiles requires students to engage in both practical and theoretical study. This specification requires students to cover design and technology skills and knowledge in the categories of technical principles, designing and making.

HOW WILL I BE ASSESSED IN FRENCH?

Students will sit two exam papers.

Paper 1: Technical Principles

Written exam: 2.5 hours • 120 marks • 30% of A-level
Mixture of short answer and extended response questions.

Paper 2: Designing and making principles

Written exam: 1.5 hours • 80 marks • 20% of A-level
Mixture of short answer and extended response questions
Section A: Product analysis: 30 marks
Section B: Commercial manufacture: 50 marks

Non-exam assessment (NEA)

Practical application of core technical principles, core designing and making principles and additional specialist knowledge
Substantial design and make project • 100 marks • 50% of A-level
Evidence: Written or digital design portfolio and photographic evidence of final prototype.

FUTURE PATHWAYS & CAREERS IN FASHION & TEXTILES

There are many jobs in Fashion not just designing, these include Fashion Marketing and buying, Journalism, Styling, Promotion, Textile Design, There are many jobs in Fashion not just designing, these include Fashion Marketing and buying, Journalism, Styling, Promotion, Textile Design, Costume design for films and TV, Teaching to name a few. Many of our students use the excellent grades from their Textiles to get into University.

Past students have gone to Herriot Watt in Scotland, De Montfort in Leicester, London, Southampton, Bournemouth, Epsom and Warwick.

One of our former students is making dresses for Strictly Come Dancing, another is a garment technologist for Marks and Spencer, another is chief buyer for Animal. Several students now have managerial roles at Rolls Royce. Some of our ex-students are currently teaching in local primary schools.

STUDENT COMMENT

"I love my Textiles lessons. Don't be fooled it is a lot of hard work but the practical work is amazing and you learn about designers and the fashion industry."

FURTHER INFORMATION FROM
MRS SMITH

FRENCH

ENTRY REQUIREMENTS

At least grade 5 or above in French

WHY STUDY THIS COURSE?

Opting for French A level will allow you to:

- Develop the knowledge and skills you acquired at GCSE level and use the language learned in a wider range of contexts.
- Gain a useful insight into another culture and reflect on aspects of contemporary society.
- Enhance your employment prospects, facilitate foreign travel and experience the enjoyment of improving your linguistic level.

WHAT WILL I STUDY IN FRENCH?

The topic areas for AS and A2 will require students to develop knowledge and understanding of the language through studying the society, culture and history of the country or countries where the language is spoken

The core content covers the following areas:

- Social issues and trends
- Political and Artistic culture
- Grammar

You will also have to study either one literary text in French or one French film

HOW WILL I BE ASSESSED IN FRENCH?

Students will be assessed in the following areas:

- The ability to demonstrate a sound understanding of spoken and written French
- The ability to respond effectively and accurately in spoken and written French to questions and prompts on a range of topic areas
- Knowledge and understanding of French grammar
- Knowledge of at least one French cultural topic – a book or film
- The ability to translate in the language

The assessments cover the 4 skills of listening, reading, writing and speaking.

FUTURE PATHWAYS & CAREERS IN FRENCH

Degree in French, international studies, tourism, business

Career in tourism, business, teaching, journalism, fashion, translation and these are just a few...

STUDENT COMMENT

“French is challenging yet interesting. It has encouraged me to be more confident in communicating with people even in my own language. Studying French has enabled me to talk French almost fluently and also to learn a lot about France and French culture.”

FURTHER INFORMATION FROM MISS JONES

GEOGRAPHY

ENTRY REQUIREMENTS

Students must have at least 5 GCSEs grades 9 - 4 including geography and students would have a grade 4 in Mathematics. Students that have not studied the subject at GCSE who wish to study GCE geography may be considered (dependent on their GCSE grades).

WHY STUDY THIS COURSE?

Geography involves the study of people, places and the environment; the A Level course includes a range of issues that we face in the modern world including climate change and globalisation. Geography also supports other A Level subjects, such as Biology, Law or Sociology, as it is both an art and a science. Careers in sustainability and green issues, urban regeneration, energy supply or managing the effects of hazards are obvious choices. An understanding of global economics forms an important part of geography and it supports Business Studies. If you are thinking of a career in law, human rights, international relations or welfare then geography gives you the opportunity to consider relevant issues.

The department has excellent resources including ICT and textbooks for revision and the staff are experienced in teaching A Level Geography. The fieldwork offers an opportunity to see Geography come to life in the real world as we are both an urban and a coastal area.

WHAT WILL I STUDY IN GEOGRAPHY?

Paper 1 (9GE0/01) (30%) 2h 15min (105 marks)

Section A Topic 1: Tectonic Processes and Hazards.

Section B Topic 2: Landscape Systems, Processes and Change. Students answer Topic 2A Coasts

Section C Topic 5: The Water Cycle and Water Insecurity and Topic 6: The Carbon Cycle and Energy Security.

Paper 2 (9GE0/02) (30%) 2h 15min (105 marks)

Section A Topics 3 and 7: Globalisation / Superpowers.

Section B Topic 4: Shaping Places. Students choose Topic 4A: Regenerating Places

Section C Topic 8: Global Development and Connections. Students answer Topic 8A – Health and Human Rights

Paper 3 (9GE0/03) (20%) 2h 15min (70 marks)

An externally-assessed written examination comprising three sections. A resource booklet will contain information about the geographical issue. Sections A, B and C all draw synoptically on knowledge and understanding from compulsory content drawn from different parts of the course

HOW WILL I BE ASSESSED IN GEOGRAPHY?

Students follow the Edexcel GCE Geography specification. There are 3 externally assessed exams and one independent study worth 20% of the A Level.

Fieldwork

Fieldwork is a compulsory part of AS Unit 2 Geographical Investigations. Students undertake 4 day trips to places such as London Docklands/ Brighton and Bournemouth/Hastings to investigate rebranding and crowded coasts respectively.

FUTURE PATHWAYS & CAREERS IN GEOGRAPHY

Careers in sustainability and green issues, urban regeneration, energy supply or managing the effects of hazards. For a career in law, human rights, international relations or welfare then geography gives you the opportunity to consider relevant issues.

STUDENT COMMENT

“Having geographical knowledge of the world is useful and interesting!”

FURTHER INFORMATION FROM MS MCVEY
ROOM 122

GERMAN

ENTRY REQUIREMENTS

At least grade 5 or above in German

WHY STUDY THIS COURSE?

Opting for German A level will allow you to:

- Develop the knowledge and skills you acquired at GCSE level and use the language learned in a wider range of contexts.
- Gain a useful insight into another culture and reflect on aspects of contemporary society.
- Enhance your employment prospects, facilitate foreign travel and experience the enjoyment of improving your linguistic level.

WHAT WILL I STUDY IN GERMAN?

The topic areas for AS and A2 will require students to develop knowledge and understanding of the language through studying the society, culture and history of the country or countries where the language is spoken

The core content covers the following areas:

- Social issues and trends
- Artistic culture in the German speaking world
- Grammar

You will also have to study either one literary text in German or one German film

HOW WILL I BE ASSESSED IN GERMAN?

Students will be assessed in the following areas:

- The ability to demonstrate a sound understanding of spoken and written German
- The ability to respond effectively and accurately in spoken and written German to questions and prompts on a range of topic areas
- Knowledge and understanding of German grammar
- Knowledge of at least one German cultural topic – a book or film
- The ability to translate in the language

The assessments cover the 4 skills of listening, reading, writing and speaking.

FUTURE PATHWAYS & CAREERS IN GERMAN

Degree in German, international studies, tourism, business

Career in tourism, business, teaching, journalism, fashion, translation and these are just a few...

STUDENT COMMENT

"German has given me the opportunity to learn about a new culture and look at history in a new light. I have enjoyed earning the grammar rules and have developed my communication skills which I hope I will be able to use when I go to Germany."

FURTHER INFORMATION FROM MRS CLARK

GOVERNMENT AND POLITICS

ENTRY REQUIREMENTS

Grade C (4) or above at GCSE in English and History / Geography

WHY STUDY THIS COURSE?

Studying Government and Politics will allow students to develop their critical thinking skills and the ability to interpret, evaluate and comment. It also allows students to acquire knowledge and understanding of the structures of authority and power within the political system of the United Kingdom, and how these may differ from those of other political systems around the world.

WHAT WILL I STUDY IN GOVERNMENT AND POLITICS?

Students will study 3 modules over the space of 2 years.

At AS, candidates will develop a broad knowledge and understanding of the political system of the UK. We concentrate on People, Participation and Politics as well as Governing Modern Britain.

At A2, there are a range of options available to study, including US Politics, US Government and Ideologies, as well as issues such as Politics and Power. The A2 unit also includes a focus on the 2016 election of Donald Trump.

HOW WILL I BE ASSESSED IN GOVERNMENT AND POLITICS?

X3 exam papers

FUTURE PATHWAYS & CAREERS IN GOVERNMENT AND POLITICS

Degrees in History, Politics, Law, Philosophy, English, Economics, Sociology, Psychology and this can lead to careers in: Journalism, Medicine, Law, Vets, Dentists, Accountants, Archivists, Librarians, Sports Science, Royal Marines, Retail Management, Research, University Lecturers, Police, Psychologists—and these are just a few.

STUDENT COMMENT

“Government and Politics has helped me to develop a strong understanding of the way that our country and others are run. The standard of teaching is excellent and we always receive high quality feedback.”

**FURTHER INFORMATION FROM
MR FROST OR MR OSBORNE**

HISTORY

ENTRY REQUIREMENTS

Students must have at least 5 GCSEs grades A*-C, (9-4) including History. Students that have not studied the subject at GCSE who wish to study GCE History may be considered.

WHY STUDY THIS COURSE?

“Those who do not study the past are condemned to repeat it”

Historians are often asked: what is the use or relevance of studying History. Why on earth does it matter what happened long ago? The answer is that History is inescapable. It studies the past and the legacies of the past in the present. Far from being a ‘dead’ subject, it connects things through time and encourages its students to take a long view of such connections.

The department has excellent resources and experienced teachers. This year marks the first teaching of a brand new History course. Students follow the challenging but well-rounded OCR specification and will be faced with investigating some of the most famous Historical events and figures over the last 500 years.

WHAT WILL I STUDY IN HISTORY?

AS History

Unit 1: Britain between c.1930-97
 - From Conservative domination to Britain’s world position in 1997.
 - Enquiry- Winston Churchill 1930-51

Unit 2: The French Revolution 1774-1815
 - The cause and results of the French Revolution
 - Napoleon Bonaparte 1779-15

A2 History

Unit 3: Civil rights in the USA 1865-92
 - Life for African Americans, Native Americans, Women.
 - The Civil Rights Movement and Black Power.

Unit 4: Independent research essay
 4000 word essay that can be produced on the student’s choice of topics.

HOW WILL I BE ASSESSED IN HISTORY?

3 externally assessed examinations.

2 in year 12 and 1 in year 13.

The Independent research essay will be assessed by centres and then externally by the exam board.

FUTURE PATHWAYS & CAREERS IN HISTORY

Degrees in History, Politics, Law, Philosophy, English, Economics, Sociology, Psychology

Careers in Journalism, Doctors, Lawyers, Vets, Dentists, Accountants, Archivists, Librarians, Sports Science, Royal Marines, Retail Management, Research,

University Lecturers, Police, Psychologists—and these are just a few.

FURTHER INFORMATION FROM MR FROST

MATHEMATICS

ENTRY REQUIREMENTS

To be considered for the course we will require a minimum of a 7 in GCSE Mathematics

(Students who do attain a 6 will only be considered under exceptional circumstances)

WHY STUDY THIS COURSE?

Mathematics is at the core of education; in an ever more technologically driven society a good grasp of the fundamentals of Mathematics is essential. The subject is fascinating in its own right but it also underpins a multitude of other subjects and forms a key qualification for entry to many University courses.

Mathematics presents a challenge to the intellect and at A-Level is not for the faint hearted. However, for those students who choose to meet the challenge the rewards, both intellectually and in terms of enhanced career prospects, are considerable.

WHAT WILL I STUDY IN MATHEMATICS?

A-level Mathematics consists of two strands: Pure Mathematics and Applied Mathematics.

Pure Mathematics builds on the key skills algebra and number skills encountered in GCSE and extends them into new and challenging areas.

Applied Mathematics covers Statistics and Mechanics.

Statistics applies Mathematical skills to the collection and interpretation of Data and is a useful module for anyone proposing to study Business or Life Sciences.

Mechanics explores the relation of Mathematics to the real world of forces, energy and motion and is important for students thinking of pursuing studies in Physics or Engineering.

HOW WILL I BE ASSESSED IN MATHEMATICS?

The assessment consists of 3 exams which are taken at the end of year 13.

Paper 1 Pure Mathematics

Paper 2 Pure Mathematics

Paper 3 Mechanics and Statistics

Each paper is 2 hours long and they are equally weighted (100 marks each)

FUTURE PATHWAYS & CAREERS IN MATHEMATICS

Mathematics will enhance any application form to University and is a prerequisite for a vast number of courses such as Accountancy, Astronomy, Statistics, Physics, Chemistry and Engineering (Electrical, Electronic, Cybernetic, Mechanical, Aeronautical, Civil and Chemical).

It is also useful for degrees in, Business, Economics, ICT, Medicine and Veterinary Medicine.

Careers in which Maths is useful or essential include Education, Banking and Finance, Architecture, Graphic Design, Web Design, Market Research, Quantity Surveying, Games Design, Air Traffic Control, Flying and Telecommunications.

STUDENT COMMENT

"I really enjoy the satisfaction of being able to complete difficult questions and understanding challenging new topics."

**FURTHER INFORMATION FROM
MR WESTON, MR MOLES, MISS HAMILTON,
MISS VAN DER ARK**

FURTHER MATHEMATICS

ENTRY REQUIREMENTS

To be considered for the course we will require a minimum of an 8 in GCSE Mathematics (Students who do attain a 7 will only be considered under exceptional circumstances)

Please note that Further Mathematics may only be taken along with Mathematics

WHY STUDY THIS COURSE?

This course is particularly aimed at students with a love of Mathematics and a desire to extend and deepen their knowledge of the subject; it will provide a serious and genuine challenge but also great rewards.

WHAT WILL I STUDY IN FURTHER MATHEMATICS?

A-level Further Mathematics consists of two strands: compulsory content and optional content

Compulsory content

This focuses on extending the skills encountered in the pure components of the **A-level Mathematics** course and developing techniques which are key building blocks of University Mathematics, Science and Engineering degrees.

Optional content

Options can be taken from a variety of areas:

- Further Pure
- Further Statistics
- Further Mechanics
- Decision Mathematics

HOW WILL I BE ASSESSED IN FURTHER MATHEMATICS?

The assessment consists of 4 exams which are taken at the end of year 13.

Paper 1 Further Pure Mathematics 1

Paper 2 Further Pure Mathematics 2

Paper 3 Option (Chosen from the list above)

Paper 4 Option (Chosen from the list above)

Each paper is 1 hour 30 minutes long and they are equally weighted (75 marks each)

FUTURE PATHWAYS & CAREERS IN FURTHER MATHEMATICS

Whilst generally not a prerequisite for degree studies it is undoubtedly true that being able to offer A-level Further Mathematics is seen as highly desirable by most Universities. Students who undertake degree courses with a high mathematical content will find that this A-level certainly smooths the transition to University studies and that they have an advantage over those students without it.

Careers in which Maths is useful or essential include Engineering, Education, Banking and Finance, Architecture, Graphic Design, Web Design, Market Research, Quantity Surveying, Games Design, Air Traffic Control, Flying and Telecommunications.

STUDENT COMMENT

"I chose Further Maths as I enjoy the more challenging nature of the work and I find it really satisfying when I succeed at a really difficult question."

**FURTHER INFORMATION FROM
MR WESTON, MR MOLES, MISS HAMILTON,
MISS VAN DER ARK**

MEDIA STUDIES

ENTRY REQUIREMENTS

5 GCSE grades at grade C/4 or above, including a grade 4 in either English Language or English Literature.

WHY STUDY THIS COURSE?

In 'the online age' the media play a major role in our lives. They are the main providers of information and entertainment. The Media can shape what we know about the world and are often our main source of ideas and opinions, so it makes sense to investigate what they provide and why. By doing the course you will acquire high order media literacy skills that will enable you to access a broad range of social and cultural experiences and are transferable to a wide range of careers. You will also have the opportunity to produce your own media texts using industry standard technology. The sheer economic power of the media makes them significant and worthy of study. The media industries in this country employ thousands of people directly and make the employment of thousands of others possible.

If you have a personal interest in any specific media form - music, film, television, magazines, the internet - and you want to investigate these further then you should take Media Studies.

WHAT WILL I STUDY IN MEDIA STUDIES?

Unit 1: Media Representations (External On-Screen Exam 2 Hours)

Learners will consider how different media representations are constructed by media producers to create meaning, messages and values.

Unit 4: Pre-Production Portfolio (Internal Assessment)

Learners study the requirements of planning and delivering a digital media product, carrying out essential pre-production tasks and creating a pre-production portfolio.

Unit 8: Responding to a commission (External assessment)

This unit considers the commissioning process and how media producers respond to clients by generating ideas using a range of skills.

Unit 14: Digital Magazine Production (Internal Assessment)

Learners will explore codes and conventions of different magazine genres and platforms. They will select and prepare content, and create layouts for a specific genre of magazine.

HOW WILL I BE ASSESSED IN MEDIA STUDIES?

Unit 1: Media Representations External on-screen exam. (2 hours)

Unit 4: Pre-Production (Internal Assessment.)

Unit 8: Responding to a commission (External Assessment.)

Unit 14: Digital Magazine Production (Internal Assessment.)

Equivalent in size to one A Level. Two units are externally assessed. Mandatory content (83%) External assessment (58%)

FUTURE PATHWAYS & CAREERS IN MEDIA STUDIES

FE Vocational and Degree courses in Media Studies, Media Production, Communication, Journalism, Marketing, Sociology.

Careers in all aspects of Media Research and Production, Marketing, Public Relations, Social Research, Teaching. With Media the possibilities are endless!

STUDENT COMMENT

"Media has given me the confidence to express myself and give a creative flair to my work" "Media allows me to express my opinion as well as being creative, I have enjoyed it so much that to take a Media course at University and then to pursue a career in the sector."

FURTHER INFORMATION FROM
MRS TAYLOR

PHOTOGRAPHY

ENTRY REQUIREMENTS

At least a 5 grade in GCSE Photography. If you have not taken Photography for a GCSE you will have to show a portfolio of personal work to prove you can meet the requirements for the course.

WHY STUDY THIS COURSE?

At the Regis School we offer a digital and film Photography course that allows students to develop a diverse and creative portfolio using both film and digital manipulation skills using up to date software such as Photoshop. You will have the opportunity to experiment with materials, refine processes and create dynamic and refined outcomes. This will enable you to continue to expand on prior learning, building upon your technical and practical knowledge of digital and analogue photography, and explore the potential of the medium by taking creative risks.

WHAT WILL I STUDY IN PHOTOGRAPHY?

You will begin to develop your own photographic voice through projects that aim to enable you to find the areas of the medium which you have an interest in. You will also look at the changing styles and traditions in photography and develop critical skills and knowledge of other photographers, artists and designers. There will also be an opportunity to visit local and London Galleries. Students will be expected to visit galleries and museums as part of their independent learning.

HOW WILL I BE ASSESSED IN PHOTOGRAPHY?

Component 1: Personal Investigation

Students are required to produce an individual investigation based on personal starting points, devised by you in consultation with your teachers. This investigation should include both supporting studies and unique outcome(s), as well as a 3000 word essay which explores the critical context of your area of study.

Component 2: Externally Set Assignment

The externally set assignment (ESA) paper, which contains a broad-based theme with supporting visual and written stimuli will be released each year on 1 January. The ESA paper can be given to students any time after its release date. Students will be required to respond to one externally-set, broad-based thematic starting point to encourage independence in developing ideas, intentions and outcome(s).

FUTURE PATHWAYS & CAREERS IN PHOTOGRAPHY

Photographer; Director; Graphic Designer; Visual Merchandising; Film Production; Cinematographer; Advertising; Animator; Fashion; Curating within Museums and Galleries; Journalism; Theatre and Television.

**FURTHER INFORMATION FROM
MRS CAMERON-LAURIE OR MISS REYNOLDS**

PHYSICS

ENTRY REQUIREMENTS

Entry qualification: Grade B in Additional Science.

Due to the extended nature of Triple Science students with a C grade in GCSE Physics will be accepted on a case by case basis. Due to the nature of the course, a 6 in Maths is also preferable.

WHY STUDY THIS COURSE?

Physics concerns itself with describing the universe. From the things we take for granted every-day; like forces, motion, sound and light to the amazing, like the cosmos, space-time and the quantum world.

By constantly improving our understanding we try to find ways to make the world better for society.

Our modern laboratory facilities provide us with the perfect environment to combine the theory and practical elements of the course. Over the years we have found the best ways to support and develop the independent learning skills necessary for success in 6th form and at university. Beyond the curriculum the department is partnered with the University of Brighton and supports three students a year completing Nuffield research placements in the summer holidays.

WHAT WILL I STUDY IN PHYSICS?

A/S

- 1. Measurements and their errors**, including use of SI units and their prefixes, limitations of physical measurement, estimation of physical quantities
- 2. Particles and radiation**, including constituents of the atom, particle interactions, collisions of electrons with atoms
- 3. Waves**, including progressive waves, interference, diffraction
- 4. Mechanics and energy**, including projectile motion, Newton's laws of motion
- 5. Electricity**, including current/voltage characteristics, circuits, electromotive force and internal resistance

A2

- 1. Further mechanics and thermal physics**, including periodic motion, thermal energy transfer, molecular kinetic theory model
- 2. Fields**, including Newton's law of gravitation, orbits of planets and satellites, magnetic flux density
- 3. Nuclear physics**, including evidence for the nucleus, radioactive decay, nuclear instability

Plus one option from:

- Astrophysics, including classification of stars by luminosity, Doppler effect, detection of exoplanets
- Medical physics, including physics of vision, ECG machines, x-ray imaging
- Engineering physics, including rotational dynamics, thermodynamics and engines
- Turning points in physics, including discovery of the electron, Einstein's theory of special relativity
- Electronics, including discrete semiconductor devices, data communication systems

HOW WILL I BE ASSESSED IN PHYSICS?

AS: 2 written papers comprising 100% of the marks 1.5 hours in duration

A2: 3 written papers. Paper 1 and 2 are both 34% of the final grade and cover the course topics individually, and each contains a multiple choice section. Paper 3 is worth the remaining 32% of marks and contains practical based questions, and questions on the option topic in year 2.

FUTURE PATHWAYS & CAREERS IN PHYSICS

Physics is one of the most respected A Levels and will be looked upon favourably by any student wishing to follow a path into higher education or employment.

Physics leads into many university degrees, from numerous pure physics courses that look at a variety of aspects including astrophysics and particle physics, to more vocational degrees like engineering and architecture.

Any medical or veterinary path will be enhanced by a high physics A level grade

Many other careers, such as law and journalism, require some people with specialist physics knowledge.

STUDENT COMMENT

Physics is fascinating. The more I understand about the working of our universe the more I realise how amazing it is. Learning through experimentation allows me to understand how the mathematics applies to real life situations and helps me to understand complex ideas.

FURTHER INFORMATION FROM MR ROBBINS

PRODUCT DESIGN

ENTRY REQUIREMENTS

Grade 6 or above in Product Design and Grade 5 in English

WHY STUDY THIS COURSE?

If you have a passion for Designing and Manufacturing this is the A Level for you. The qualification is recognised by all universities and for any course, many of our students go on to study Engineering, Architecture Graphics, Product Design.

WHAT WILL I STUDY IN PRODUCT DESIGN?

AS - In the AS course you will learn about materials and components, famous designers and design movements. The coursework consists of two design project. Designed to give you an in-depth understanding of a range of materials and processes

A2 - in year 13 you will undertake a single major project where you will design and make a piece of furniture.

During both years two of the lessons a week will be on the theory exams and the others will be on the controlled assessment

HOW WILL I BE ASSESSED IN PRODUCT DESIGN?

1. 2.5 hours exam, technical principals 30%
2. 1.5 hours exam, design and making principals 20%
3. Controlled assessment 50%

Coursework – Approximately 35 hours – 25% of A Level

FUTURE PATHWAYS & CAREERS IN PRODUCT DESIGN

There are many jobs in Product Design and related fields.

Locally we have strong links with URT who are an engineering company who working in composite materials and manufacture parts for F1 Cars, the ministry of defence and everywhere in-between. They have very good apprentice positions every year for selected students. There are currently 4 ex-students involved in this.

There is also an ex students working as an apprentice at Rolls Royce.

We have students currently away at university studying: Architecture, Graphic Design, Product Design, Engineering, Mechanical Engineering, Aerospace Engineering and Medical Engineering.

Any student that wishes to go to university will be given support in putting together a portfolio of work to take to interviews, any student looking for another path will be guided and supported so that they get the right option

STUDENT COMMENT

“It’s great to be able to do something different, creative and enjoyable.”

FURTHER INFORMATION FROM MR ASHER

PSYCHOLOGY

ENTRY REQUIREMENTS

6 or above in both English Language and Literature, 6 or above in all Sciences. 5 GCSEs at grade A*-C, no homework/effort gradings of a 3.

WHY STUDY THIS COURSE?

A fascinating subject that investigates the Science of the brain and human behaviour. You will gain an understanding of human interaction and behaviour that you will be able to apply to your everyday life. You will find the information useful in a range of jobs from sales to care work to policing. Psychology opens lots of doors in the future and is a highly valued qualification.

WHAT WILL I STUDY IN PSYCHOLOGY?

Topics covered in AS units include: Social Influence, Memory, Research Methods, Approaches in Psychology, Psychopathology, Biopsychology and Attachment.

A2 topics include: Gender, Eating behaviour, Forensic Psychology, Issues & Debates and Research Methods.

HOW WILL I BE ASSESSED IN PSYCHOLOGY?

A2: 3 90 minute written exams, each worth 33.3%

FUTURE PATHWAYS & CAREERS IN PSYCHOLOGY

Future paths: Psychology, Criminology, Forensics, Early Childhood Studies and Mental Health are just a few examples.

Careers in: Clinical, Educational, Forensic Psychology.

STUDENT COMMENT

"I've always been interested in people and how our minds work. Psychology opens more doors than you realise and what you discover is fascinating".

FURTHER INFORMATION FROM MISS HOWLAND

RELIGIOUS STUDIES

ENTRY REQUIREMENTS

5 subjects at grade C and above. Grade 5 at English GCSE is desirable.

WHY STUDY THIS COURSE?

Have you ever asked yourself the question 'Why do I exist?', 'Does God exist? Is there such thing as a selfless good deed? Why should I follow rules?' Studying Religious Studies, will in no-way provide the answers to these questions, if anything it will make you ask more!

This course provides an opportunity for students to engage with a variety of topical questions around belief, values, meaning, purpose and truth. Students will be able to reflect on and develop their own values, beliefs and attitudes in light of what they have learnt. There will be a range of relevant and contemporary themes to study that will promote awareness of modern-world issues and engagement within the classroom. The new A-level Religious Studies specification offers a range of faith-specific options, ensuring students have a thorough understanding of diverse philosophical and ethical viewpoints.

The course features a variety of relevant and contemporary themes, to help inspire engaging classroom discussion. Students will also gain critical and evaluative skills sought after by higher education and employers.

Students of all abilities will be challenged and inspired, whilst developing valuable skills sought after by higher education and employers. It is a highly regarded subject, which develops your critical thinking skills. You will enjoy it if you enjoy discussion and argument about ideas. Students have felt it really helped them with their study of English, History, Geography and Science. It is ideal as a supporting subject for University entrance for any arts course, law and to support the study of science and medicine.

WHAT WILL I STUDY IN RELIGIOUS STUDIES?

Component 1 – Year 1

Section A: Philosophy of religion

- Arguments for the existence of God.
- Evil and suffering.
- Religious experience.
- Religious language.
- Miracles.
- Self and life after death.

Section B: Ethics and religion

- Ethical theories.
- Issues of human life and death.
- Issues of animal life and death.
- Introduction to meta ethics.
- Free will and moral responsibility.
- Conscience.
- Bentham and Kant.
- Crime and Deviance with Theory and Methods

Component 2 – Year 2

Section A: Study of religion – For each faith option (2A–2E) the following topics are covered:

- Sources of wisdom and authority.
- God/gods/ultimate reality.
- Self, death and the afterlife.
- Good conduct and key moral principles.
- Expression of religious identity.
- Religion, gender and sexuality.
- Religion and science.
- Religion and secularisation.
- Religion and religious pluralism.

Section B: The dialogue between philosophy of religion and religion.

How religion is influenced by, and has an influence on philosophy of religion in relation to the issues studied.

Section C: The dialogue between ethical studies and religion.

How religion is influenced by, and has an influence on ethical studies in relation to the issues studied.

HOW WILL I BE ASSESSED IN RELIGIOUS STUDIES?

Component 1 – Year 1

Written exam: 3 hours / 100 marks / 50% of A-level

Questions

Section A: Philosophy of religion – two compulsory two-part questions, each worth 10 marks and 15 marks

Section B: Ethics and religion – two compulsory two-part questions, each worth 10 marks and 15 marks

Component 2 – Year 2

Written exam: 3 hours / 100 marks / 50% of A-level

Questions

Section A: Study of religion – two compulsory two-part questions, each worth 10 marks and 15 marks relating to the religion chosen. Questions may be set that span more than one topic. In each two-part question, the first part tests AO1 and the second part tests AO2.

Section B: The dialogue between philosophy of religion and religion – one unstructured synoptic question from a choice of two (25 marks).

Section C: The dialogue between ethical studies and religion – one unstructured synoptic question from a choice of two (25 marks).

FUTURE PATHWAYS & CAREERS IN RELIGIOUS STUDIES

It makes a good choice for a degree. Students of Religious Studies are sought after for careers where good communication is an asset. It forms a good basis for careers in the Police, Social work, and of course, teaching. Students thinking about a career in primary teaching will find this A Level an advantage as teachers familiar with moral issues and citizenship concerns are highly valued. Students thinking about a career in psychotherapy also will find this course very useful as it refers to moral and religious issues that often people struggle with.

FURTHER INFORMATION FROM
MRS TWINN

SOCIOLOGY

ENTRY REQUIREMENTS

Students must have at least 5 GCSEs grades A*-C (9-4). Students that have not studied the subject at GCSE who wish to study A-Level will be accepted. They would be expected to have strong grades in another Humanities subject.

WHY STUDY THIS COURSE?

Sociology is an academic discipline aimed at those students who wish to understand more about themselves, the people they know, the society they live in, and other cultures and societies. Studying society will make students socially, culturally and politically aware, and capable of thinking critically about the world around them. Students always enjoy the subject. It is hard work, but it is very stimulating and relevant to their own lives. We follow the AQA specification.

Sociology is a very popular subject at TRS and benefits from energetic and enthusiastic teachers with proven excellence in teaching to A Level standard. Students are encouraged to carry out their own sociological research and will benefit from extra-curricular activities such as outside speakers and curriculum visits.

WHAT WILL I STUDY IN SOCIOLOGY?

Students will acquire knowledge of contemporary social processes and social changes. Students will be encouraged to develop their own sociological awareness through active engagement with the contemporary social world. Students will cover two core themes: • Socialisation, culture and identity • Social differentiation, power and stratification. In addition, students must know the significance of conflict and consensus, social structure and social action, and the roles of values. The AQA A Level consists of three papers. The topics that the students will cover are set out below:

- Theory and Methods (Education)
- Families and Households and Beliefs
- Crime and Deviance with Theory and Methods

HOW WILL I BE ASSESSED IN SOCIOLOGY?

Assessment will take the form of three externally assessed exams at the end of Year 13. Each paper is worth 33.3% of the final grade.

FUTURE PATHWAYS & CAREERS IN SOCIOLOGY

Studying Sociology will provide you with a variety of skills which will be of use in any job. For example, the ability to express yourself clearly in both written and oral form, the ability to think critically and not take things for granted and the ability to work co-operatively, to mention just a few. You will also be expected to show improvement in other key skill areas such as the use of ICT. A variety of higher education courses are available in the subject area which can lead students into careers such as journalism, media production, legal careers, teaching, social work, marketing, occupational therapy and many more.

**FURTHER INFORMATION FROM
MRS MILLARD OR MR OSBORNE**

EXTENDED PROJECT QUALIFICATION

ENTRY REQUIREMENTS

At least 9 GCSE grades at 6 or above, including a 6 or above in English and at least one more 7-9 grade in a subject which relates to the intended project. The Extended Project Qualification is the equivalent of half an A level – the work is completed at A level standard, and it is taken as the 4th option choice in year 12.

WHY STUDY THIS COURSE?

The Extended Project Qualification is a free-standing qualification which offers students a free project choice, so they can explore in depth

- an aspect of a subject they are studying, or
- a topic in which they have a personal interest.

Evidence can be provided in any form appropriate to the type of project chosen, and may include:

- an artefact, model or construction
- a CD/video/DVD of performances or activities
- an audiotape/multimedia presentation
- a journal of activities or events
- a slide or PowerPoint presentation
- a photographic record of the project.

The Extended project will develop and build upon a wide range of transferable skills that will be useful for all other subject areas chosen. These will include decision making and problem solving, independent learning, research, critical thinking, analysis, synthesis, evaluation and presentation skills.

WHAT WILL I STUDY IN EPQ?

The topic for the project is chosen by the student and agreed by the student's teacher, who then acts as his or her supervisor. The student has to show that they can meet the following objectives:

AO1 – Manage

Identify, design, plan, and complete the project, applying organisational skills and strategies to meet stated objectives.

AO2 - Use Resources/Research

Obtain and select information from a range of sources, analyse data, apply relevantly and demonstrate understanding of any appropriate linkages, connections and complexities of your topic.

A03 - Develop and Realise

Select and use a range of skills, including new technologies, to solve problems, to take decisions critically, creatively and flexibly, and to achieve planned outcomes.

A04 - Review

Evaluate outcomes including your own learning and performance. Select and use a range of communication skills and media to convey and present evidenced outcomes and conclusions.

HOW WILL I BE ASSESSED IN EPQ?

Most students who complete the EPQ write an extended essay of 4000 words. However, you can choose to create something or undertake an investigation, which will be supported by a 2000 word write-up to show your research process. You will also deliver a formal presentation of your findings to your peers at the end of the course, and complete a full production log which shows your progress towards completing the project over time.

FUTURE PATHWAYS & CAREERS IN EPQ

The EPQ offers you a unique opportunity to develop essential skills for higher education and the workplace, in a subject area of your own choice.

STUDENT COMMENT

"It taught me how to research information accurately and present my findings in more depth and at University level."

**FURTHER INFORMATION FROM
MRS V WALKER**

APPLIED SCIENCE

BTEC LEVEL 3 EXTENDED CERTIFICATE

ENTRY REQUIREMENTS

Grade C in Additional Science, or a pass in level 2 BTEC Applied Science.

WHY STUDY THIS COURSE?

The level 3 BTEC is a single award equivalent to one A level. It is designed to provide a vocational angle to the learning of science and delivers a broad balanced science education encompassing biology, physics and chemistry. As the course is a BTEC there are both exam and coursework components.

WHAT WILL I STUDY IN APPLIED SCIENCE?

The course follows the 3 compulsory units taught:

1. Principles and applications of science (external exam)
2. Practical techniques (internal coursework)
3. Science investigation skills (externally marked ISA style controlled assessment)
4. An option topic (internal coursework)

HOW WILL I BE ASSESSED IN APPLIED SCIENCE?

As it is a BTEC there is a mixture of written exams, practical exams and coursework

FUTURE PATHWAYS & CAREERS IN APPLIED SCIENCE

A BTEC level 3 course can lead to a number of vocational avenues in the NHS or industry. The BTEC approach makes it also a good fit as an additional course for students aiming to study science A levels as they supplement each other.

STUDENT COMMENT

"I enjoyed my science at GCSE and wanted to continue studying science as I enjoy it. BTEC allows me to keep track of my progress and not having an exam means I have more time to revise for my other A levels when the exam period begins. By completing my work up to a merit standard I get the same amount of UCAS points as a Grade C A level."

**FURTHER INFORMATION FROM
MISS OFFER OR MRS MARSTON**

COMPUTING

BTEC LEVEL 3 NATIONAL DIPLOMA IN COMPUTING

ENTRY REQUIREMENTS

5 A*-C or equivalent grades at GCSE including English and Maths

WHY STUDY THIS COURSE?

This qualification is designed to support learners who want an in-depth study of the computing sector as part of a 16–19 study programme. This programme may include other BTEC Nationals or A Levels to support progression to higher education courses in computing areas before entering employment. The additional qualification(s) studied allow learners either to give breadth to their study programme by choosing a contrasting subject, or to give it more focus by choosing a complementary subject.

WHAT WILL I STUDY IN COMPUTING?

The qualification provides the knowledge, understanding and skills that will prepare learners for further study or training. Learners have the opportunity to develop a significant core of knowledge in computer science, as well as additional skills in systems analysis and design, systems methodology, computer programming and product development and testing. Everyone taking this qualification will study six mandatory units, covering the following content areas:

- principles of computer science
- fundamentals of computer systems
- planning and management of computer projects
- IT systems security and encryption
- business applications of social media
- the impact of computing.

Two optional units from a group that has been designed to support progression to the range of sector-related courses in higher education and to link with relevant occupational areas. The optional units offer breadth and depth of topic areas relevant to computing, such as:

- infrastructure development
- networking and forensics
- development and testing
- apps development.

HOW WILL I BE ASSESSED IN COMPUTING?

1x 2hr Written Exam at the end of Yr 12
 1x 1 ¾ hr Written Exam in Yr 13
 1x 5hr Practical Assessment at the end of Yr 13
 5x Coursework Units each consisting of 2 Assignments Spread over the 2 years

FUTURE PATHWAYS & CAREERS IN COMPUTING

In addition to the sector-specific content, this qualification develops learners' transferable and higher-order skills that are highly regarded by higher education and employers. A significant portion of recruitment for specialists in computer science is at graduate level and this qualification is designed to support progression to higher education ahead of employment.

The qualification carries UCAS points and is recognised by higher education providers as contributing to admission requirements for a range of BTEC Higher National and Foundation Degree courses at higher education level, such as:

- HND Computer Systems and Design
- FdSc in Computing and Networking.

When studied with other qualifications, such as an A Level or BTEC Extended Certificate in a different or complementary subject area, such as science, technology, engineering or mathematics (STEM), learners can progress to higher education on a full degree course, for example:

- BSc (Hons) in Business Studies and Computing
- BSc (Hons) in Computer Forensics and Security
- BSc (Hons) in Creative Computing
- BSc (Hons) in Computer Systems Engineering.

STUDENT COMMENT

"Taking BTEC Computing has really helped me build my skills and confidence, particularly with programming."

FURTHER INFORMATION FROM MR SILVER

HEALTH AND SOCIAL CARE (TRIPLE AWARD)

BTEC LEVEL 3 NATIONAL DIPLOMA

ENTRY REQUIREMENTS

5 GCSEs at grade 4 (or C) or above, must include English & Science.

WHY STUDY THIS COURSE?

This is an exciting and varied course, based on the vocational area of Health and Social Care. If you have a lively and enquiring mind and are thinking of working in care, health, social services or teaching, or consider yourself to be a "people person" this would be a useful area of study.

WHAT WILL I STUDY IN HEALTH AND SOCIAL CARE?

Year 1: Units of work are studied:

1. Human Lifespan Development - examined
2. Working in Health and Social Care – examined

Coursework:

5. Meeting Individual Care and Support Needs
6. Work Experience in Health and Social Care
7. Principles of Safe Practice in Health and Social Care
8. Promoting Public Health
9. Infection Prevention and Control

Year 2: Possible further units of work are studied:

3. Anatomy and Physiology for Health and Social Care - examined
4. Enquiries into Current Research in Health and Social Care – controlled assessment

Then a further choice of coursework units*:

9. Infection Prevention and Control
10. Sociological Perspectives
11. Psychological Perspectives
12. Supporting Individuals with Additional Needs
13. Scientific Techniques for Health Science
14. Physiological Disorders and their Care
15. Microbiology for Health Science
16. Policy in Health and Social Care
17. Caring for Individuals with Dementia
18. Assessing Children's Development Support Needs
19. Nutritional Health.....

(* not all units covered but a choice of)

HOW WILL I BE ASSESSED IN HEALTH AND SOCIAL CARE?

- 3 examinations
- 1 Controlled assessment
- Coursework
- Course worth 3 'A' levels

FUTURE PATHWAYS & CAREERS IN HEALTH AND SOCIAL CARE

Higher Education: eg Primary School Teaching, Childhood Studies, Social Work, Nursing.

Careers in Care, Social Work, Primary Teaching, Public Services and many more.

STUDENT COMMENT

"I am really enjoying my course. I am learning so many new things and doing my own research for my coursework. I find out my grades as I go, so I am more in control of my progress."

"The examined units allow us to look into the subjects into more depth and I can build on my knowledge from year 10/11"

"This is a brand new course for me this year, I really enjoy it, we get to try out a range of things such as first aid & work experience"

**FURTHER INFORMATION FROM
MRS MATTEN ROOM 319**

MUSIC BTEC L3 DIPLOMA (DOUBLE AWARD)

ENTRY REQUIREMENTS

- Successful completion of GCSE music (A-C) or BTEC Level 2 award in Music.
- You must be able to play a musical instrument or be able to sing
- You must be prepared to perform.
- You must be able to work independently and collaboratively.

WHY STUDY THIS COURSE?

Prepares young people for careers in the performing arts or music industry.

Provides opportunities for musicians to develop a range of skills and techniques.

Motivates learners via applied learning and assessment.

BTEC qualifications are recognised by employers and education institutions.

Provides a good progression route to more advanced qualifications.

WHAT WILL I STUDY IN MUSIC?

Throughout the two year course you will complete the following units:

Ensemble music performance techniques

Professional practice in the music industry

Music Skills development

Creating a music Product

Live music events

Music performance session styles

HOW WILL I BE ASSESSED IN MUSIC?

The course is a two year course and is equivalent to two A Levels. The new BTEC Nationals use a combination of assessment styles to enable learners to showcase their skills and application of knowledge, so they can progress to higher education or employment. There are three types of assessment: Assignments, set tasks and a written exam

FUTURE PATHWAYS & CAREERS IN MUSIC

Students have progressed to degree programs in Music performing, song writing and Music technology at ACM, BIMM London, BIMM Brighton.

STUDENT COMMENT

“BTEC Music takes your knowledge and expertise to a higher level. As a BTEC Music student, your main priority is to develop performing skills and be ready to plan and star in your own music event.”

**FURTHER INFORMATION FROM
MISS MUNFORD**

PERFORMING ARTS BTEC FOUNDATION DIPLOMA (6 UNITS)

ENTRY REQUIREMENTS

4/5 or above in Dance or Drama at GCSE level OR an audition with the Performing Arts teachers.

WHY STUDY THIS COURSE?

This bespoke course allows you to study and develop high levels of skills in the creation and performance of drama, movement or a combination of both and will prepare you for a wide range of performing arts-based university and specialist college courses. You will be able to work on substantial pieces of performance work, which you will perform in a range of venues to a range of audiences. You will also have the opportunity to undertake a wealth of opportunities, including community performance work and workshops with external practitioners.

WHAT WILL I STUDY IN PERFORMING ARTS?

You will need to complete the following core compulsory units.

Acting Styles

Community Performing

Group Workshop Performance

Investigating Practitioner's work

In addition, you will complete units which will be selected and agreed with your teacher to ensure that you are able to use specialist skills in either acting or movement.

HOW WILL I BE ASSESSED IN PERFORMING ARTS?

This course involves constant assessment of learning logs, rehearsals and performance work which are both internally and externally assessed.

FUTURE PATHWAYS & CAREERS IN PERFORMING ARTS

This course is the equivalent to one and a half A Levels. The high levels of practical and performance work set students up for university auditions and interviews.

Practical auditions are usually compulsory for any performing arts courses in higher education, including dance, drama, performing arts and musical theatre courses.

STUDENT COMMENT

"I am really enjoying learning about so many different theatre practitioners and their contrasting styles!"

"We did a community performance as part of Armed Forces Celebration day and it was really moving."

"I have performed in styles I never thought I would do and really enjoyed myself and surprised myself."

"It feels like being part of a proper theatre company and Miss calls us the Sixth Form Drama Company."

FURTHER INFORMATION FROM
MS LELLIOTT

SPORT BTEC EXTENDED CERTIFICATE & EXTENDED DIPLOMA IN SPORT

ENTRY REQUIREMENTS

5 GCSEs, including English at 5 or above and Biology or a similar science qualification at B or above

WHY STUDY THIS COURSE?

This course is perfect for students looking to continue their studies in sport. The course has two options: either the BTEC National Extended Diploma in Sport (equivalent of 3 A Levels) or the

BTEC Extended Certificate in Sport (equivalent of 1 A Level)

WHAT WILL I STUDY IN SPORT?

BTEC Extended National Diploma in Sport:

14 units over a 2 year period. Examples of these include Anatomy and Physiology, Fitness Training, Practical Team Sports, Sports Leadership, Coaching for Performance, Officiating, and Sports Psychology.

BTEC Extended Certificate in Sport:

This course is covered in 4 units over a 2 year period. Anatomy and Physiology, Fitness Training, Professional Development and one other optional unit.

HOW WILL I BE ASSESSED IN SPORT?

The majority of the units in the course are assessed internally through various assignments. These are produced in many forms, some of which are written, others are presented and others are practically based.

Each unit comes with an opportunity to gain a pass, merit or distinction and will go towards the overall grade at the end of the course.

There are also 4 externally examinable units in the Extended Diploma and 2 in the Extended Certificate. Three of the exams are have a pre released section and notes can be prepared to take into the exam with them.

FUTURE PATHWAYS & CAREERS IN SPORT

There are many career paths that are available after studying this course, including progression onto higher education at university to include: teaching, sports science, sports studies, sports therapy, sports development, as well as a range of careers in both coaching and leadership.

STUDENT COMMENT

"The course was superb for my confidence. It has allowed me to gain a high level qualification as well as focus on my own personal development. The support I received throughout the course was exceptional and without that I really do not feel I would have gained the grades I did. The course challenged me, but also provided me with a great deal of fun. I would thoroughly recommend this to anyone who enjoys sport!"

**FURTHER INFORMATION
FROM JENNY LOVELOCK
(JLOVELOCK2@THEREGISSCHOOL.CO.UK)**









BELIEVE, ASPIRE, ACHIEVE

www.theregisschool.co.uk

The Regis School Sixth Form
Westloats Lane
Bognor Regis
West Sussex PO21 5LH
Tel: 01243 871010 Fax: 01243 871011
Email: enquiries@theregisschool.co.uk

"The Sixth Form is a brilliant place for study, allowing students to reach their full potential whilst maintaining a friendly and supportive learning environment" *Georgia*

"The 6th Form is a great place to learn, the staff go above and beyond for the students. The support I have received here has been exceptional" *Katy*

"The Sixth Form is a great stepping stone towards the future as the caring staff have always pushed me towards my goals" *Elliott*

"The Regis Sixth Form is a great place to study. The facilities are brilliant and the staff are always supportive and here to help" *Lucy*

"The Regis School 6th Form is very supportive and will always help you to achieve your personal goals" *Harry*

Principal: Mike Garlick
Head of 6th Form: Connie James 01243 871083
email: Connie.James@theregisschool.co.uk
Sixth Form Administrator: Sue Potter
Sixth Form Office tel: 01243 871087
email: Susan.Potter@theregisschool.co.uk